

Directions

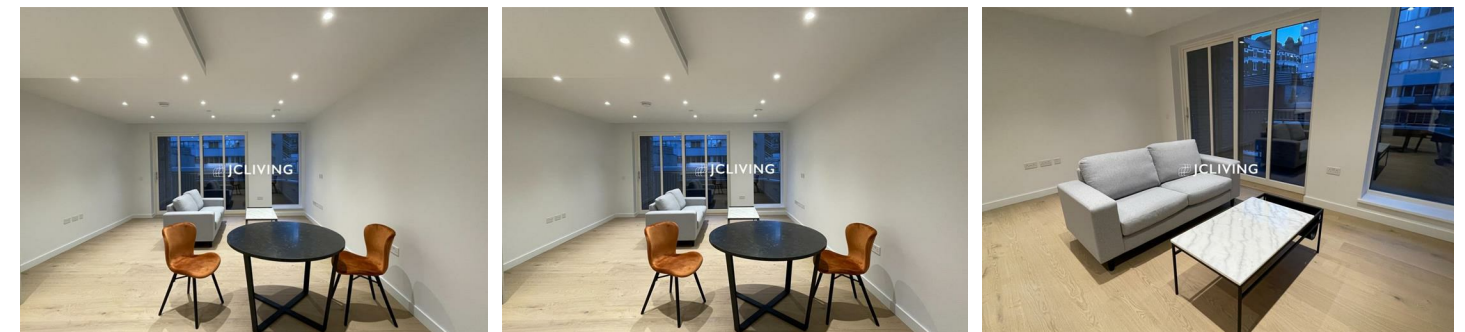
Viewings

Viewings by arrangement only. Call 02033696888 to make an appointment.

EPC Rating

B

Energy Efficiency Rating		Current	Potential
Very energy efficient - lower running costs			
(92 plus) A			
(81-91) B		85	85
(69-80) C			
(55-68) D			
(39-54) E			
(21-38) F			
(1-20) G			
Not energy efficient - higher running costs			
England & Wales		EU Directive 2002/91/EC	



Flat 5, Dorset House 14 Mount Pleasant, London, WC1X 0BU

£780 Per Week

Dorset House 14 Mount Pleasant, London WC1X 0BU

*** Please quote reference JC230687 when contacting the office ***

Modern one-bedroom apartment to rent in Dorset house, Postmark Development.

Spanning an impressive 699 square feet, the property boasts a well-designed layout that maximises space and light.

Upon entering, you are welcomed into a spacious reception room, ideal for both relaxation and entertaining guests. The apartment features one generously sized bedroom, providing a tranquil retreat at the end of the day. The contemporary bathroom is fitted with high-quality fixtures, ensuring a luxurious experience.

Constructed in 2021, this apartment benefits from the latest building standards and energy efficiency, making it an excellent choice for those seeking a sustainable lifestyle. The location in Mount Pleasant is particularly appealing, with easy access to local amenities, transport links, and the vibrant culture of London.

This property is perfect for first-time buyers or those looking to invest in a modern, stylish home in one of London's most sought-after areas. Don't miss the opportunity to make this delightful apartment your own.



Council Tax Band: E

